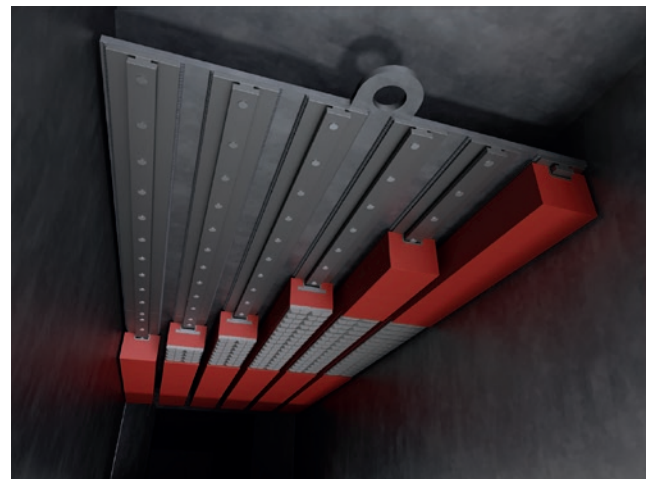
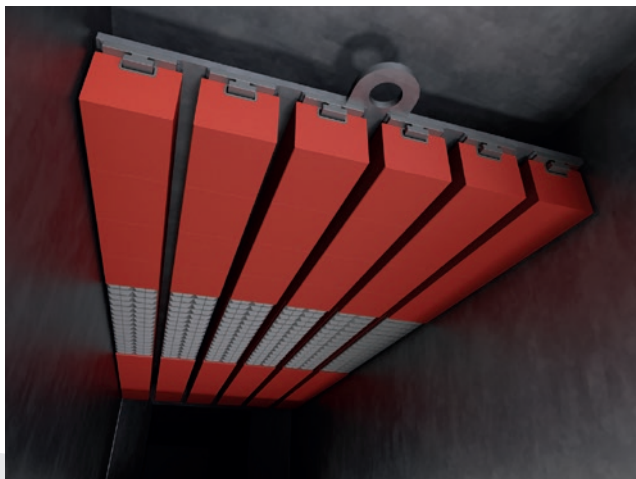
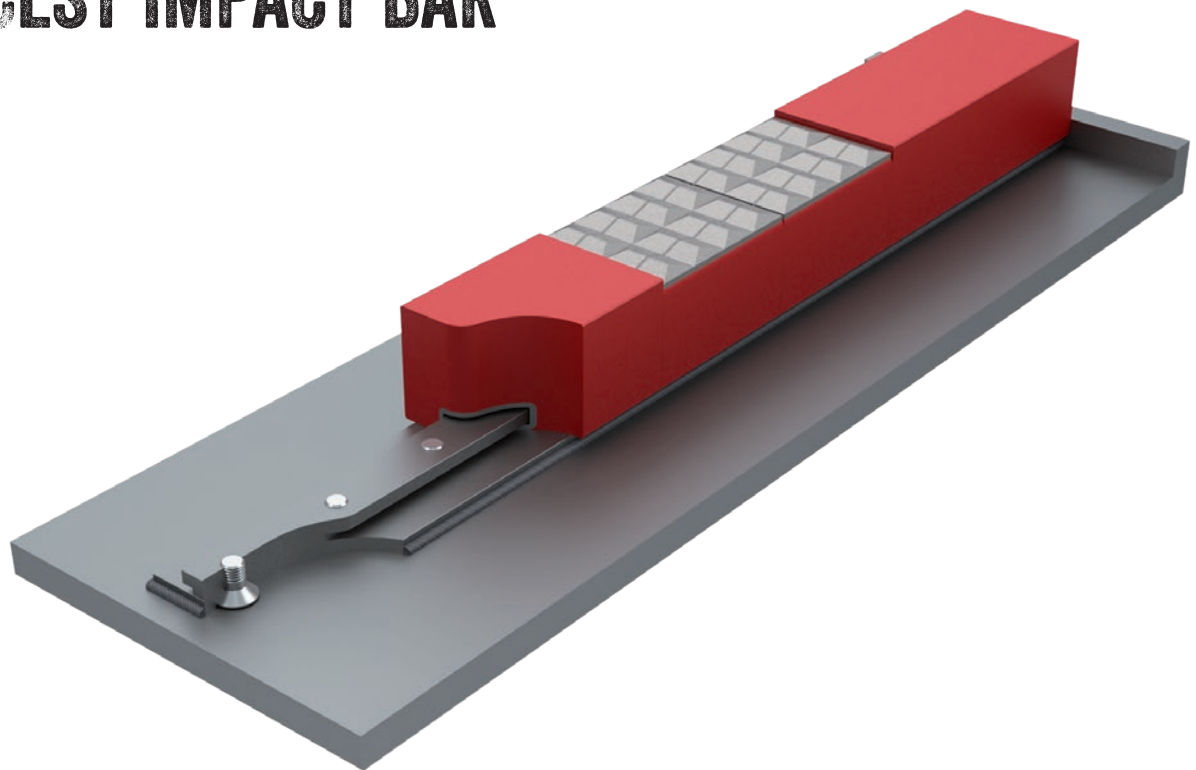


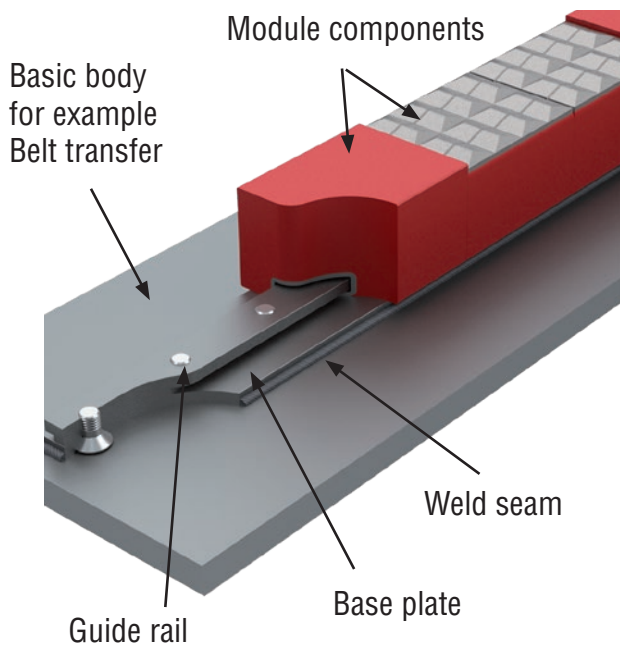
The flexible impact protection

PUCEST IMPACT BAR



SYSTEM

Variable arrangement of different system impact beams as module components on guide rails, which can be screwed or welded as a complete assembly in the component.



The assemblies consist of module building blocks, a base plate and a guide rail for the module building blocks, which is screwed onto the base plate. The base plate can then be welded to the main body. As a variant, the guide rail can be screwed to the base body without a base plate.

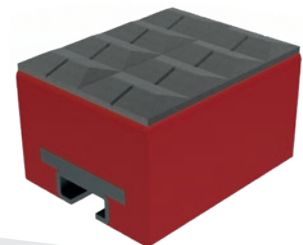
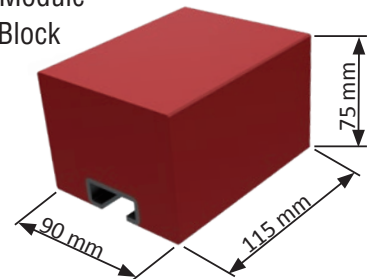
DIMENSIONS

The system impact bars are supplied as a complete assembly with modular building blocks, guide rail and base plate in any length.

The assemblies can be variably equipped with modular building blocks made of solid PUCEST 65° Shore material, and with modular building blocks with a hard metal surface. The module components with a hard metal surface can be arranged at points with the highest impact wear.

This also compensates for points with an unfavorable impact angle, which otherwise wear out very quickly.

PUCEST Module-Building Block



PUCEST module with hard metal surface

PRINCIPLE OF COST-EFFECTIVE REPLACEMENT OF PUCEST SYSTEM IMPACT BEAMS



The installed PUCEST System - impact bars



The module building blocks in use



The module building blocks in worn condition



The worn module components are taken out...



Tungsten carbide modular components can be used at the points of highest wear



The new carbide module components are installed