

THE PUCEST BLOW-IN ELBOW



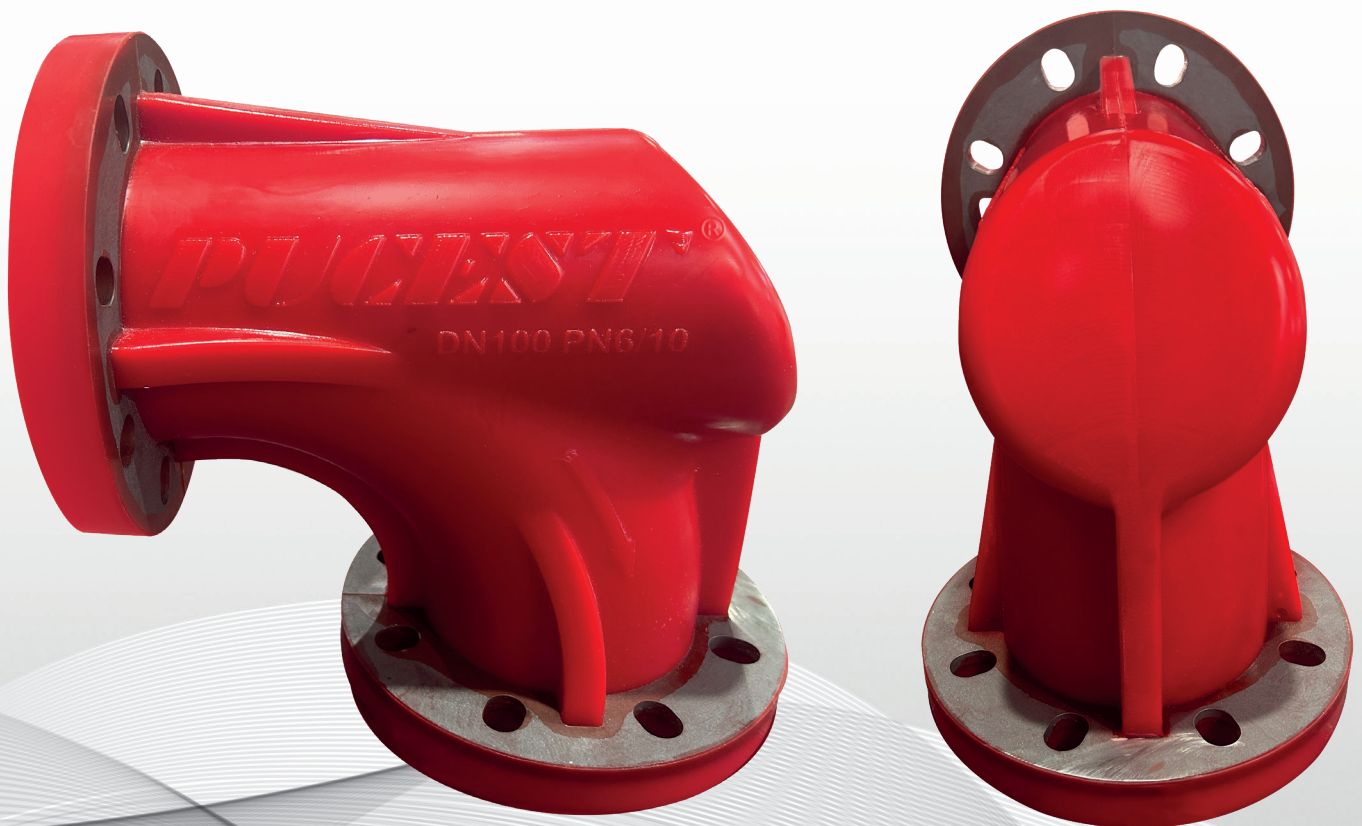
THE PUCEST BLOW-IN ELBOW

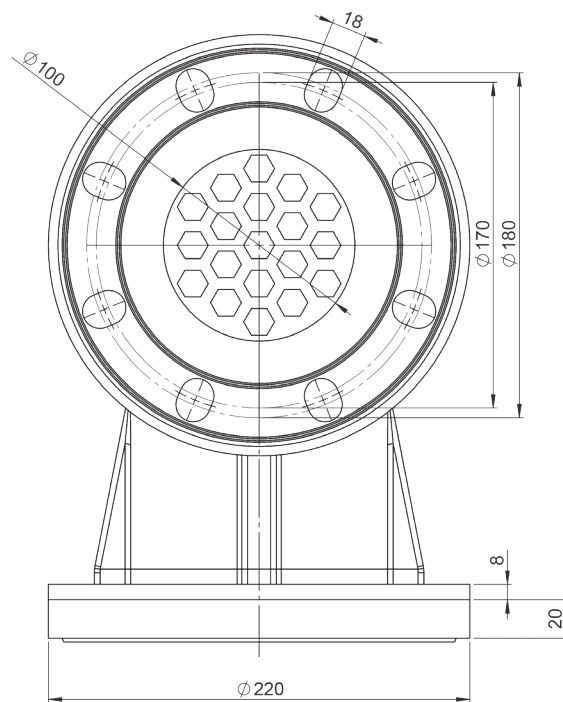
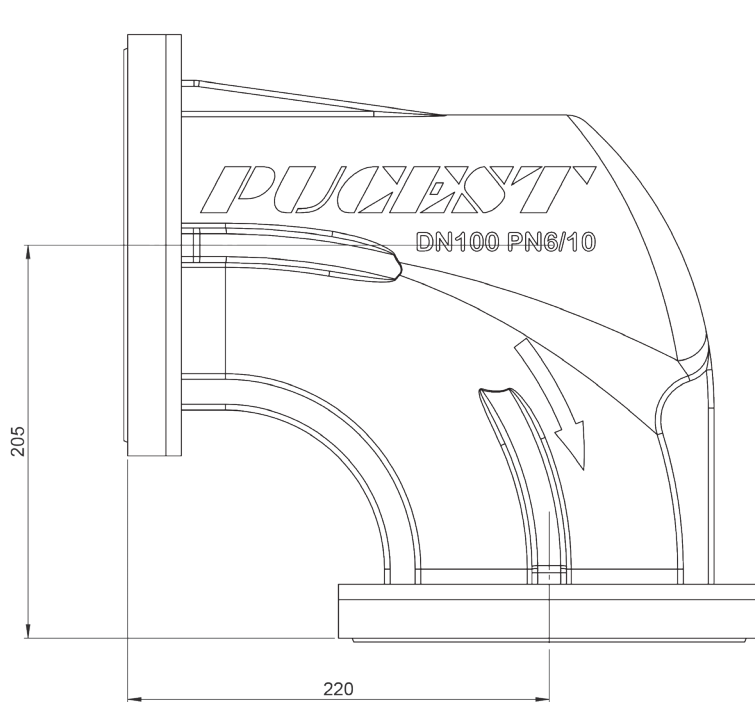
with cast-in flange rings

The PUCEST blow-in elbow is used for conveying fine-grained material. The conveying material is collected in the honeycomb-shaped pockets, thus preventing turbulence in the air flow and the collected material also serves as wear protection.

The PUCEST material is significantly more wear-resistant than most materials used in this field. The combination of the special shape of the elbow and the special geometric arrangement of the honeycomb system achieves excellent results in terms of service life.

The blow-in elbow consists of a 90° elbow, which is screwed to the pipe ends with the cast-in flange rings and 8 hexagon head screws. The inside diameter of the elbow is 100 mm. Due to the elongated holes in the flange, the elbow is suitable for installation with PN6 and PN10.





THE ADVANTAGES OF THE PUCEST BLOW-IN ELBOW:

- Reduction of the flow resistance
- Wear protection due to unique honeycomb system
- No risk of clogging
- Suitable for vacuum and overpressure conveying
- Minimal pressure drop
- Also available with FDA approval





**Im Höning 11
D-63820 Elsenfeld**

Phone +49 6022 26401-0

Fax +49 6022 26401-20

Email: info@pucest.com

<https://pucest.de>